

ALL LOTS 16, 17, 18, & 19, BLOCK 6, SIMORON PARK ADDITION
 & PART OF S.E. 1/4 OF SEC. 15, T.6 N., R.1 W., S.L.B. & M.

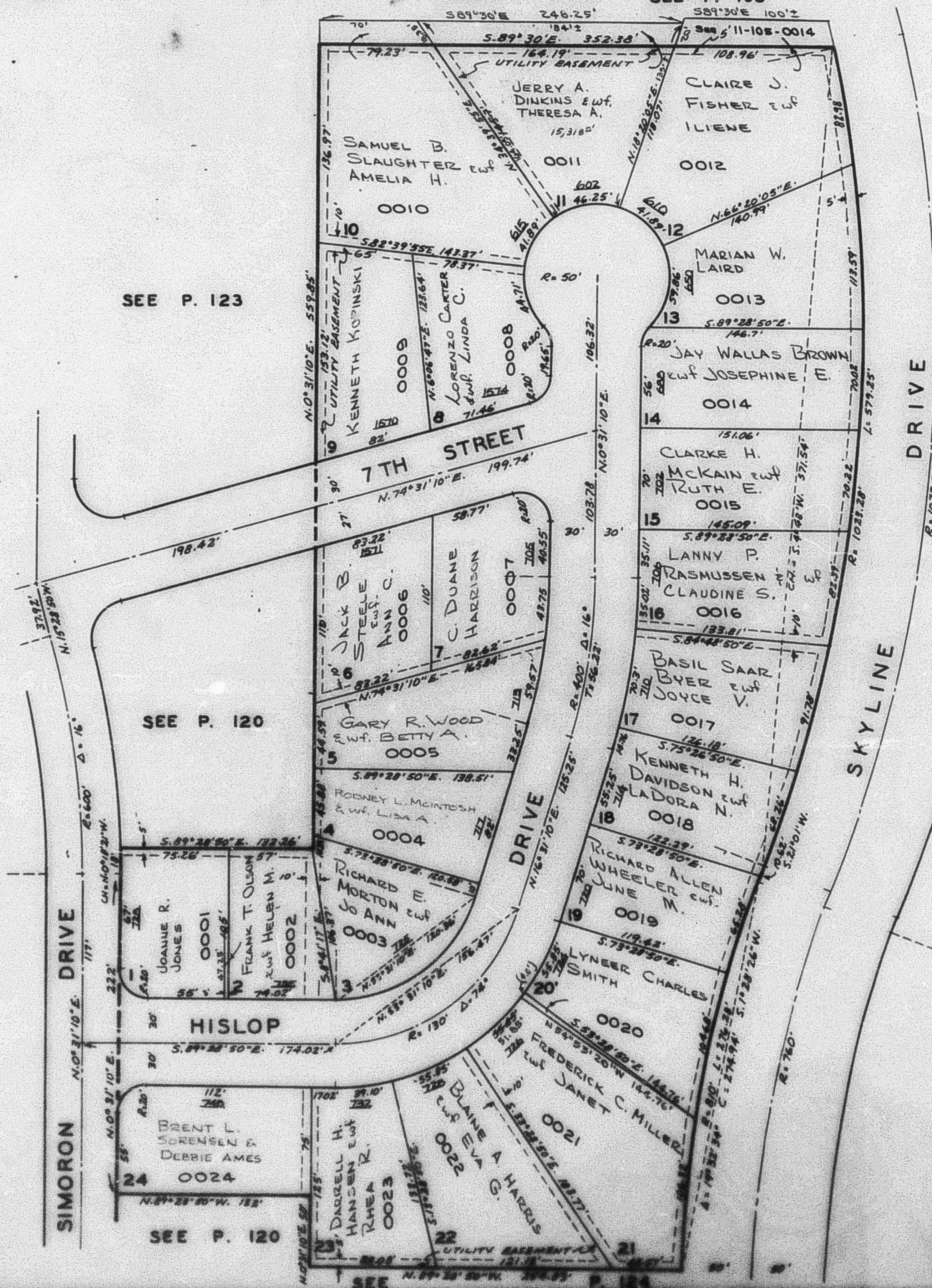
COLONIAL HILL SUBDIVISION NO.1

IN OGDEN CITY

TAXING UNIT: 25

SCALE 1" = 60' SEE P. 105

PREFIX: 11-106



SEE P. 123

SEE P. 120

SEE P. 105